

K210 / K220

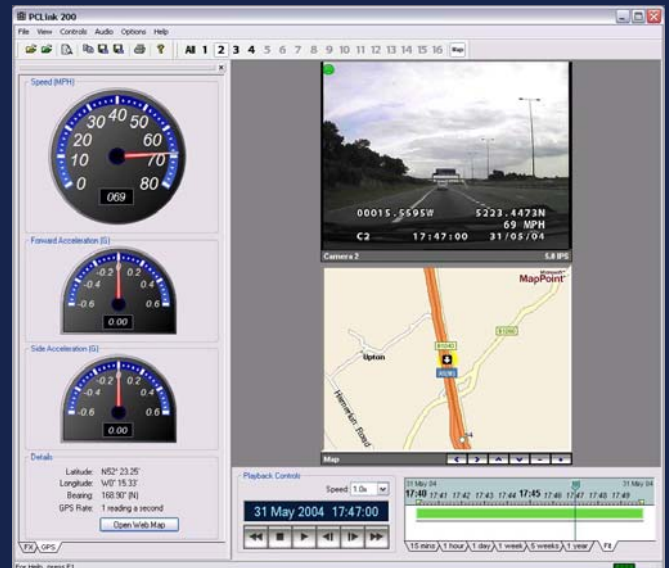
Digital Video Recorder

16GB Compact Flash
Colour monitor and speaker for instant playback and configuration (K220)

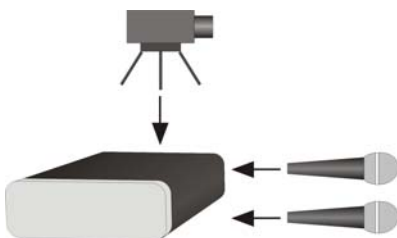


Product Features

- Ultra Small Size
- Robust
- Military-Grade Connectors
- Low Power Consumption
- 1 Video and 2 Audio Inputs, 2 Alarm Inputs
- 5V, 9V, 12V Camera Power
- 25 Images/Second
- Record via Front Panel Switch or External Trigger
- Vibrator Output to indicate Recording State and/or amount of Memory used
- Watermarked Images
- Password Access Protection
- Simple Menu Configuration
- LEDs For Power and Disk Capacity

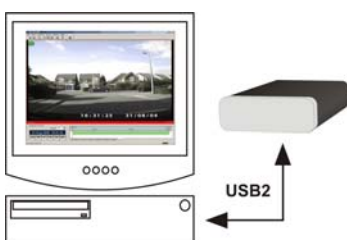


[PCLink Reviewing/Archiving Software](#)



The K210/K220 Digital Video Recorder has 1 video, 2 audio and 2 alarm inputs.

Recordings are stored on an internal 16GB Compact Flash and can be displayed on the integral monitor, with audio, (K220) or on a PC (K210/K220).



The K210/K220 can be connected to a PC via the supplied USB2 lead to download recordings.

The K210/K220 menu settings can be configured using the PC utility. K220 configuration is also available via the integral monitor.

K210/K220 Specification

RECORDING

Activation	Manual switch, external triggers (Alarm 1 or 2) or Timer.
Media	16GB Compact Flash, supplied installed
Recording modes	Single Pass or Loop recording (typical duration for Single Pass is 8 hours @ max rate)
Power On Until Recording	<5 seconds

VIDEO RECORDING

Rate	Up to 25ips PAL, 30ips NTSC (lower record rates configurable).
TVL	540
Pixels	720 x 288 PAL; 720 x 240 NTSC
Format	MPEG - Full Update
Input Signal	1 input; composite video 1V p-p; colour/mono; PAL/NTSC
Embedded Text	Date/time and up to 26 user-defined characters (triggered by alarm input)

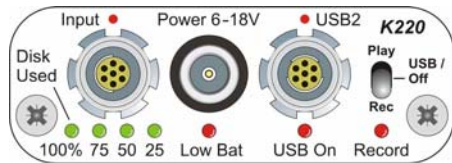
AUDIO RECORDING

Type	Mono or stereo
Inputs	2 Mic level inputs 3V phantom powered (compatible with most condenser mics)
Sampling Rate	16 kHz or 8 kHz
Sampling Res.	16 bits or 8 bits

MONITOR (K220 only)

Screen	Colour LCD
Size	2.5" (50 x 38mm)
Pixels	720 x 288 PAL; 720 x 240 NTSC
Controls	Rewind, Stop, Play, Fast Forward, File Select and Menu keys.

CONNECTORS/CONTROLS/INDICATORS



Actual Size

Toggle Switch	Play (display on K220 monitor) Off (USB2 to PC) Rec (record audio/video to disk)
USB/Control Socket	Fischer 102 series 7 way (keyed No2) USB2 on 4 pins; control signals on 3 pins; video/audio out (USB lead-plug supplied complete)
Power Socket	Lemo 00.250 coax Series 6-18V regulated (plug supplied)
Input Socket	Fischer 102 series 7 way (keyed No1) 1 video input, 2 audio inputs, plus camera power output and on/off signal (plug supplied)
Camera Power Output	5V, 9V or 12V (menu selectable) supplied by K210/K220. NB input voltage must be at least 1V higher than camera voltage.

CONFIGURATION

Entry	PC menus via USB2 or on-screen menu via integral monitor (K220)
Security	Password protection
Date Options	dd/mm/yy; mm/dd/yy
Summertime Correction	UK; Europe; USA; Off

FILE SYSTEM

File Type	Proprietary ".xba", convertible to AVI
File Name	Optional file text plus date & time
File Size	10 min, 1 hour or continuous

GENERAL

Security	Proprietary files; password protection; fragile watermark every image [MD5+DES]; embedded camera text
Power consumption Typ	2.5W Review 3.0W Record (excluding camera)
LED Indicators	Software enable/disable
Clock	TCXO +/- 4 minutes per year
Case	Aluminium body, stainless steel end plates
Dimensions [mm]	117 x 58 x 21 mm (case)
Dimensions [mm]	121 x 58 x 21 mm (including controls)
Weight	212g
Operating Temp Range	0°C to 45°C
Supplied Accessories	USB2 cable 1.5m; PCLink Suite software CD (including manual); input and power plug
Warranty	2 years (Monitor 1 year)

PLAYBACK

File access	Via USB2 connection, using PCLink200 software (K210/K220). Video and Audio playback via integral monitor/speaker (K220 only)
-------------	--

FUTURE SOFTWARE UPDATES

GPS Input	Embedded GPS Data
RS232 Input	RS232 token command structure

PCLINK200 REVIEWING/ARCHIVING SOFTWARE (supplied)

Compatibility	Recordings made on K210/K220
Access	Via USB2 connection from K210/K220 to PC
Operating Systems	Windows 2000, XP, Vista
Hardware Requirements	2GHz Pentium, 256MByte RAM, USB2
Security	Optional password on PCLink software and on export video to AVI function
Playback Controls	Rewind, Jog back, Stop, Play and Fast Forward, Jump to time, Rapid Shuttle via timeline.
Playback Speed	Variable x0.1, x0.2, x0.5, x1, x2, x3, x4, x6, x8, x10 for rapid playback.
Features	Real time playback with audio Review archive files Copy files from K210/K220 to PC Copy images into Microsoft Word etc. Activate and verify watermarks Export video in multiple CD/DVD sized files Stand-alone playback software (PCPlayer) Export video to AVI file Motion graphing Full screen video playback Mapping display

NB - Pictures shown are K220. K210 model does not include display screen or controls.



Designed and
Manufactured in the UK



Timespace Technology are constantly improving products, and reserve the right to alter specifications at any time without notice.

5th October 2008